



Through our dedicated Rail Centres, and backed up by over 40 years of experience, Arbil offer a full and extensive range of products for Hire to the Rail Market.

Shown within this section is an overview of some of the most popular product lines, however, for a more comprehensive guide to the full Arbil range of Rail Industry products please see our dedicated **Rail Hire Guide**.

Arbil are also members of the **Link-up** scheme. Link-up being the UK rail industry supplier qualification scheme, that provides a single common registration, qualification and audit process for suppliers that is shared by the UK rail industry.

#### Track Jacks:

Zwicky® Toe Jack Type B	Pg 86
Zwicky® Toe Jack Type C	Pg 86
Zwicky® Pan Jack Type D	Pg 86
Zwicky® Track Aligner Type J	Pg 86
Stumec Slewing Jack Type H	Pg 87
Duff Norton® Trip Jack Type F and Type F Aluminium	Pg 87

#### Sleeper Handling Equipment:

Sleeper Lifting Beams	Pg 88
Sleeper Laying Beams	Pg 88

#### Rail Handling Equipment:

Rail Handling Beams	Pg 89
Camlok® Rail Lifting Clamps	Pg 89
Multi-Rail Lifting Clamps	Pg 89
Automatic Rail Clamps	Pg 90
Drag Clamp	Pg 90
Ironmen	Pg 90
Rail Thimble MK3	Pg 91
<b>Full Range Overview</b>	<b>Pg 92</b>



## Track Jacks

### Zwicky® Toe Jack Type B – Model 805BR

The jack is obstructionless for rails of 42kg/m and over and can be replaced under the rail without removal or ballast.

Fleet Code	SWL		Closed Height (mm)		Toe to Head (mm)	Lifting Stroke (mm)	Weight inc Std Lever (Kg)
	Head	Toe	Head	Toe			
RB/BR/037	8t	5t	235	95	140	90	21.7



### Zwicky® Toe Jack Type C – Model F1527

Designed for use on switches and crossings, this heavy duty jack is obstructionless for rails 42kg/m and over.

Fleet Code	SWL		Closed Height (mm)		Toe to Head (mm)	Lifting Stroke (mm)	Weight inc Std Lever (Kg)
	Head	Toe	Head	Toe			
RB/BR/038	20t	15t	343	191	152	110	39.2



### Zwicky® Pan Jack Type D – Model F1054

This obstructionless jack is placed under the rail without removal of ballast.

Fleet Code	Safe Working Load	Closed Height (mm)	Extended Height (mm)	Lifting Stroke (mm)	Weight inc Std Lever (Kg)
RB/BR/039	10t on head	95	196	101	19.7



### Zwicky® Track Aligner Type J – Model SB7417

This obstructionless hydraulic jack is designed for the aligning and slewing of track, points and crossings.

Fleet Code	Safe Working Load	Lifting Stroke (mm)	Weight inc Std Lever (Kg)
RB/BR/045	8t	152	27.4



## Track Jacks

### Stumec Slewing Jack Type H – Model CH65

This versatile jack is designed, by means of a removable slewing shoe, for slewing, aligning and lifting railway tracks, points and crossings. The jack is obstructionless to prevent traffic interruption, will slew up to 50mm and is fitted with an overload safety valve.



Fleet Code	Lifting Capacity		Lift on Shoe (mm)	Lift per pump stroke (mm)	Weight inc Std Lever (Kg)
	Shoe	Head			
RB/BR/044	5t	7t	160	4mm on shoe	30.2



### Duff Norton® Trip Jack Type F – Model 117 Steel

This Duff Norton® steel bodied jack is of the suspended pawl type, eliminating the need for a separate tripping device. The upper (holding) pawl has a spring attached which automatically forces it into position. The lower (lifting) pawl is then free for tripping.



Fleet Code	SWL		Closed Height (mm)		Lift Height (mm)	Weight inc Std Lever (Kg)
	Head	Toe	Head	Toe		
RB/BR/041B	15t	7.5t	559	50.8	330	32.4



### Duff Norton® Trip Jack Type F – Model 117A Aluminium

This aluminium lightweight version of the 117 shares the same dimensions, but has a derated safe working load of 7.5t on the head.



Fleet Code	SWL		Closed Height (mm)		Lift Height (mm)	Weight inc Std Lever (Kg)
	Head	Toe	Head	Toe		
RB/BR/041A	7.5t	7.5t	559	50.8	330	24.2



# Sleeper Handling Equipment

## Sleeper Lifting Beams

Sleeper lifting beams are available in various styles with either fixed or adjustable centres, allowing for the differing sleeper spacings.

In addition depending upon the type of beam, a wide variety of dropper chain configurations and sleeper hooks are available.

Our standard range of Sleeper Lifting Beams are configured for loading, with dropper chains fitted at half sleeper spacings.

**i** Other fastening systems are also available including Mills Clip, SHC, Vossloh etc



Fleet Code	No of Sleepers	Sleeper Centres (mm)
5LIFT 653	5	653
5LIFT 700	5	700
7LIFT 610	7	610
7LIFT 653	7	653
7LIFT 700	7	700
8LIFT 653	8	653
8LIFT 700	8	700



E Clip (Code: RB/BCI007A,B,C,D)



Fast Clip (Code: RB/BR/080)

## Sleeper Laying Beams

Our standard range of Sleeper Laying Beams with an odd number of droppers (3, 5 or 7) are configured for Sleeper Laying utilising alternate dropper chain assemblies.

When hiring beams for laying purposes, please advise us of your spacing requirements. Should you have multiple spacing requirements, Arbil Rail Centres have developed adjustable beams, please call to discuss your specific needs.

**i** All Lifting and Laying Beams are fitted with a centre lifting eye and top double leg chain sling as standard. Steering eyes can be fitted to the end of each beam if required.

Fleet Code	No of Sleepers (Laying)	Sleeper Centres (mm)
3LAY 653	3	653
4LAY 700	4	700
7LAY 610	7	610
7LAY 653	7	653
7LAY 700	7	700
8LAY 653	8	653



# Rail Handling Equipment

## Rail Handling Beams

Rail handling beams are available for handling 30, 45 and 60ft long rail sections.

These beams can be fitted with the various types of rail clamps detailed in this section, or can be used with webbing slings.

All beams are manufactured with a centre lifting eye as standard.

In addition to this they are also fitted with lifting lugs at each end for use with a double leg sling.

The lower lifting lugs are designed to accommodate the kuplex KDN10N narrow jaw shackle that is fitted to the CR range of Camlok® rail lifting clamps as detailed below.



Fleet Code	Capacity	Beam Length	Rail Length
RB/BR/211	1t	4.0m	Up to 30 Feet
RB/BR/210	1.5t	7.5m	Up to 60 Feet



## Camlok® Rail Lifting Clamps – Type CR

These clamps are designed to lift most sizes of rail now in use in the UK. The clamp is either fitted with a hook ring for direct connection to the crane, or with a plate link for fitment with a short chain assembly. This Kuplex assembly generally consists of a KSS10N egg link, 7 links of chain and a KDN10N narrow jaw shackle.

Fleet Code	Model	WLL	Weight (Kg)
RB/BR/300	CR 750	1t	13
RB/BR/301	CR 21	2t	13



**i** When using more than one clamp to lift the same load make sure that the load is always balanced

## Multi-Rail Lifting Clamps – Type MR

These clamps facilitate the fast bulk transfer of rail sections from rail stacks to wagons, retaining the rails rigidly in a flange to position.

The clamps are normally used in pairs and have automatic double safety locks and hard rubber linings preventing damage to the rail head.

Fleet Code	Model	Rails	WLL	Weight (Kg)
RB/BR/302	MR 3	3	5t	84
RB/BR/303	MR 4	4	5t	108
RB/BR/304	MR 5	5	5t	132
RB/BR/305	MR 6	6	6t	156
RB/BR/306	MR 7	7	7t	180
RB/BR/307	MR 8	8	8t	204
RB/BR/308	MR 10	10	10t	252



# Rail Handling Equipment

## Automatic Rail Clamps

Available in three capacities, these clamps are designed to locate directly onto the crane hook, or they can be modified to suit individual requirements.

The fail-safe auto-indexing pin manufactured from high tensile hardened steel, forms the operational heart of the clamp. Its design allows the operator to open and close the clamp remotely and automatically, providing both safe and efficient loading of rail.

All models are supplied in an electro-galvanised zinc plated finish.

Fleet Code	Capacity (Kg)
RB/BR/017	1000
RB/BR/018	2000
RB/BR/019	3000



## Drag Clamp

The 10 tonne drag clamp is for fitting over the head of the rail, and is a means of dragging or pulling lengths of rail upto 600ft long safely.

The clamp is suitable for 113A and UIC60 rails.

The clamp is used with various formats of tow chains and ropes, the most popular being a 4m long, 13mm grade 8, twin chain sling with large master link at each end (minimum breaking load 42.4 tonnes).

Fleet Code
RB/BR/097



## Ironmen

For transporting, lifting and transposing rail, the Ironman is generally used in pairs.

The standard model is fitted with a 1.5t Yale® D85 Pul-Lift and a CR750 Camlok® rail clamp.

Each unit requires two persons for assembly and is easily dismantled for storage and transportation.

Fleet Code
RB/BR/098



## Rail Thimble MK3

- Working load limit 3 tonnes on lifting points of vertical roller pins
- All units fully tested and certified
- All wearing parts fully heat treated
- Improved design of tapered roller pins for ease of replacement
- Hydraulic cylinder fitted as standard with safety valve in case of hose failure
- Fits 113A-50 and UIC60 rail sections
- Interchangeable between 113A and UIC60 rail by means of adjusting vertical rollers
- Hydraulic models suitable for the majority of hydraulic systems on road rail machines
- All moving parts have lubrication points
- Four standard models available with fixed or swivel eye, manual or hydraulic operated
- Additional features available to suit customers requirements

Arbil's original new generation of Rail Thimble was redesigned in conjunction with British Rail and introduced several years ago. During this time it has been used extensively in the field, both in the UK and overseas.

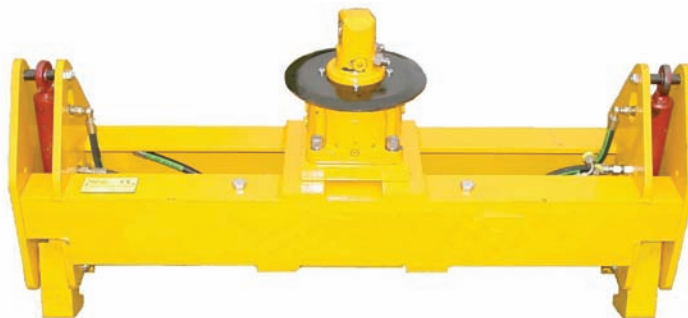
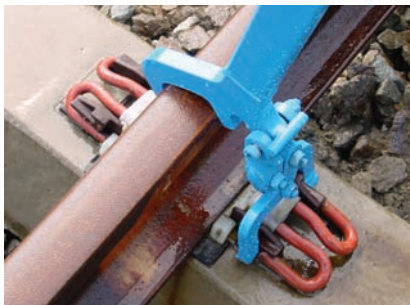
The latest Mark 3 version suits 113A, UIC60 and Bull Head rail sections and is used extensively with road rail machines and long welded rail trains.



Fleet Code	Eye Type	Operation	Weight (Kg)
RB/BR/50B	Fixed Eye	Manual	118
RB/BR/51B	Fixed Eye	Hydraulic	118
RB/BR/52B	Swivel	Manual	120
RB/BR/53B	Swivel	Hydraulic	120



## Full Product Overview



Arbil offer a full and extensive range of products for Hire and Sale to the Rail Market. With dedicated Rail Centres Arbil also provide a full service capability for all rail products backed up by over 40 years' experience.

So whether it's Hire, Sales or Service, Arbil Rail Centres offer the complete solution to the Rail Industry.

For details of the full Arbil range of Rail Industry products please see our dedicated Rail brochure.



Link-up®